

OUR SERVICES

The Family Empowerment Center serves families of children and young adults to age 22 with any disability in Lassen, Modoc, Plumas and Sierra Counties.

Disabilities can include any special needs or challenges in these areas:

- ◆ Physical
- ◆ Developmental
- ◆ Emotional
- ◆ Learning
- ◆ Behavioral

Our Family Empowerment Center services include:

- ◆ Providing information on your child's disability
- ◆ Advocating for your child with their Individual Education Plan (IEP), 504 Plan or Student Study Team (SST) process
- ◆ Connecting families with similar challenges
- ◆ IEP Clinics
- ◆ Homework strategies
- ◆ Resource & Referral
- ◆ Lending library resources: books, videos & assistive technology devices

Serving Lassen, Modoc, Plumas & Sierra Counties

Modoc & Lassen Counties

Anne O'Hern

(530) 708-2557

aohern@plumasruralservices.org

Plumas & Sierra Counties

Vikki Tuck

(530) 283-2735, ext. *829

vtuck@plumasruralservices.org

Fax: 530-283-3647

fec@plumasruralservices.org



Family Empowerment Center



WELCOME

As the parent, guardian or family member of a child or young adult with a disability, you are that child's most important advocate.



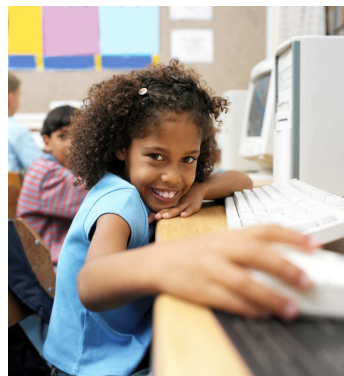
Advocate: a supporter or defender—someone who speaks on behalf of another



Plumas Rural Services' Family Empowerment Center is an equal opportunity service provider and does not discriminate against clients or volunteers on the basis of race, color, religious creed, ancestry, national origin, age, sex (including pregnancy, childbirth or related medical conditions), marital status, sexual orientation, medical condition or disability.

VISION

Through community outreach and trainings, peer support and caregiver education, the Family Empowerment Center will work to build communities by empowering parents and guardians through knowledge, skills, and motivation to ensure a greater sense of confidence when advocating for their children and young adults with diverse disabilities.



OUR GOALS

- ◆ Ensure children and young adults with disabilities are provided with a free and appropriate education (FAPE), receiving support, modifications, accommodations and services
- ◆ Work collaboratively with schools and community-based organizations
- ◆ Assist parents with understanding their child's disabilities, educational and developmental needs
- ◆ Advocate for caregivers in their communication with schools and community programs
- ◆ Assist caregivers in obtaining information and participating in school reform and decision making

